



Capabilities that differentiate APM software

What is Asset Performance Management?

APM uses software tools to monitor and manage the operational performance of physical assets. It harnesses the power of data to drive better business decisions concerning maintenance, risk management, and investments.

How does APM work?

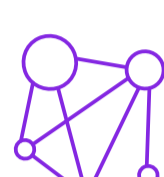


1. Asset connection

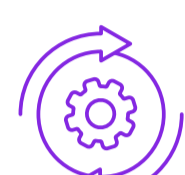
APM integrates and connects various asset-related systems within a company through:



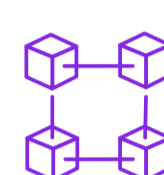
Standardized interfaces/APIs: Allows the software to communicate with a wide range of systems, making it possible to provide a unified view despite pulling data from multiple sources.



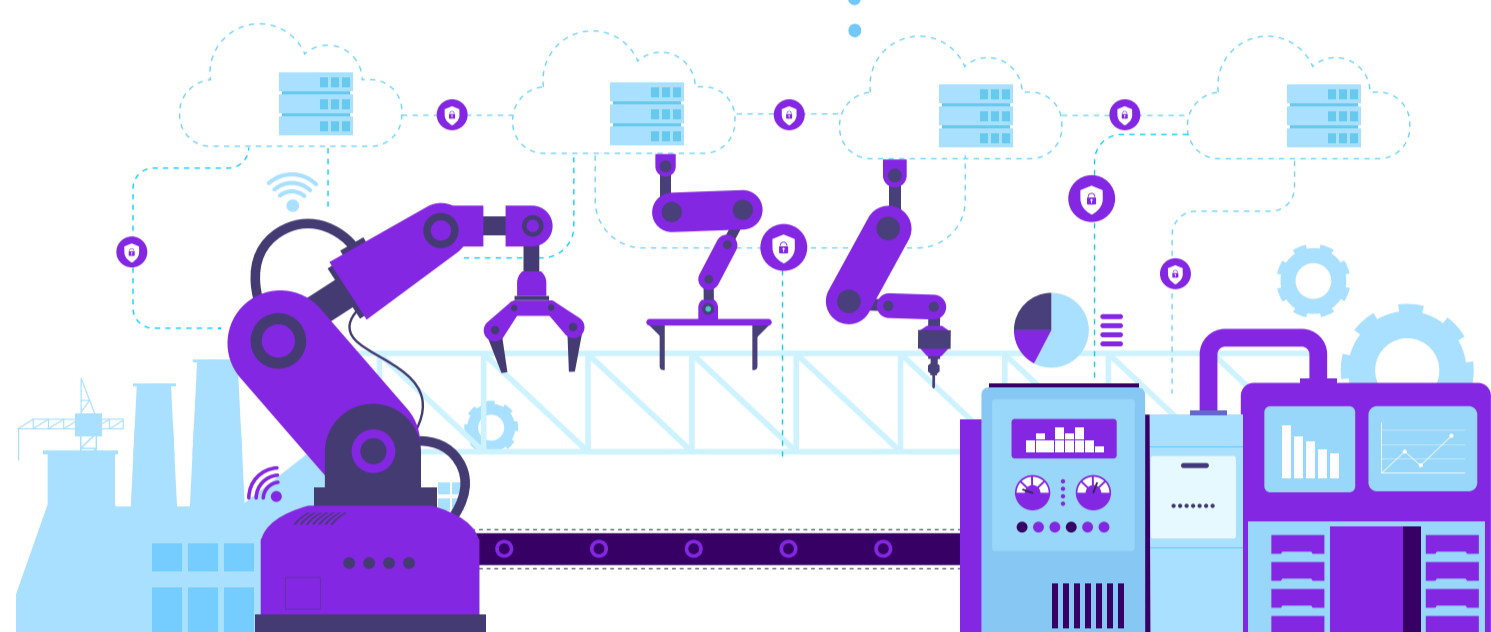
Cross-platform communication: Ensures seamless communication and allows data transfer and synchronization among different systems and devices by establishing protocols for data exchange, ensuring all systems 'speak' the same language.



Data integration and consolidation: Gathers data from ERP, EAM, and other databases and consolidates into a centralized database, allowing for more efficient data management and easier access to information.



Customizable connectivity: Allows businesses to establish specific connections based on their unique needs, helping align the data architecture with the business's operational framework.



2. Data collection

Once connected, APM systems gather crucial data such as the asset's condition, performance, cost, lifecycle status, and other relevant operational metrics.



3. Analysis & insights

Leveraging advanced analytics and AI, APM converts this raw data into actionable insights, identifying trends, predicting failures, and recommending optimal maintenance strategies.

4. Action & optimization

Based on these insights, decision-makers can take strategic actions that improve asset performance, mitigate risks, enhance safety, and ensure regulatory compliance.



Key differentiators of high-performing APM systems



Predictive maintenance: Uses machine learning to predict asset failures before they occur, reducing unplanned downtime and extending asset life.



A stellar user experience: Offers intuitive and easy-to-use interfaces, making it simple for all users to understand and navigate through the data.



Real-time monitoring: Provides real-time asset monitoring, enabling immediate response to critical changes in asset conditions.



Scalability: Can adapt and scale up, managing a more extensive asset base without losing efficiency.



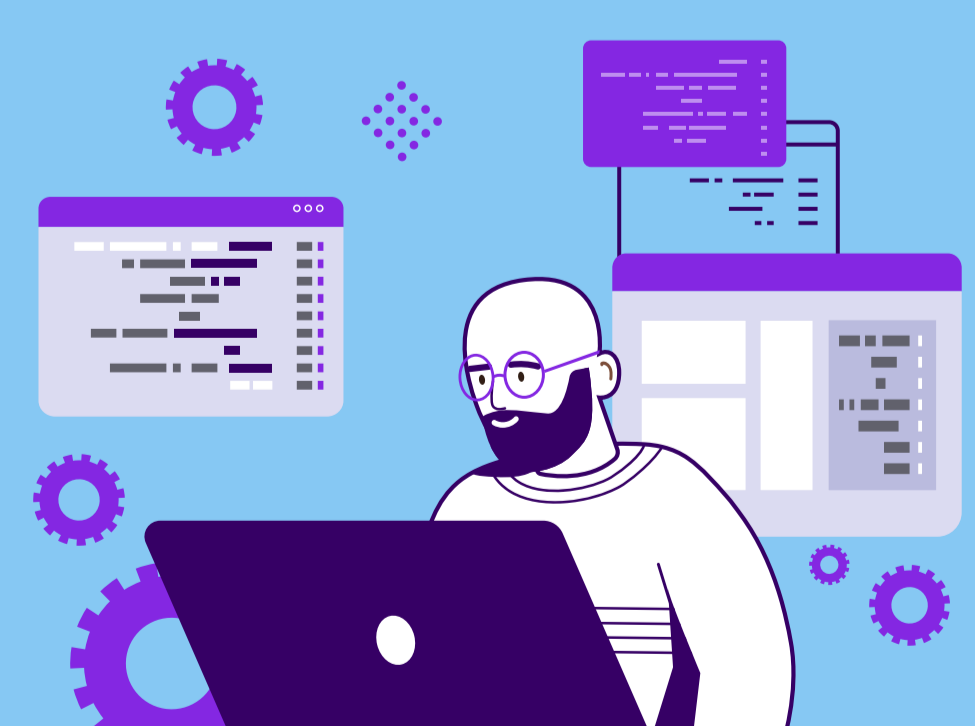
Integration capabilities: Seamlessly integrates with existing IT infrastructure, allowing for a harmonious data exchange between different business systems.



Resource optimization: Mobile maintenance engineers spend up to 20% of their time traveling and waiting, so the management of scheduling, skill requirements, expenses, and travel is a must in any efficiency effort.

The impact of APM

Harnessing the power of APM is key to staying competitive in the digital business world. Adopt an APM strategy to optimize maintenance costs, reduce equipment downtime, ensure safer operations, and make more informed investment decisions. Most importantly, choose APM software with the ability to support your unique objectives and grow along with your organization.



[Learn more about APM](#)

[Get in touch today](#)

About IFS

IFS develops and delivers cloud enterprise software for companies around the world who manufacture and distribute goods, build and maintain assets, and manage service-focused operations.

Within our software platform, our industry specific products are innately connected to a single data model and use embedded digital innovation so that our customers can be their best when it really matters to their customers – at the Moment of Service™.

The industry expertise of our people and of our growing ecosystem, together with a commitment to deliver value at every single step, has made IFS a recognized leader and the most recommended supplier in our sector.

Our global team of 5,000 employees every day live our values of agility, trustworthiness and collaboration in how we support thousands of customers. Learn more about how our enterprise software solutions can help your business today at [ifs.com](https://www.ifs.com).

Copyright © 2023 Industrial and Financial Systems, IFS AB. IFS and all IFS products and services names are trademarks of IFS. All rights reserved. This document may contain statements of possible future functionality for IFS's products and technology. Such statements are for information purposes only and should not be interpreted as any commitment or representation. The names of actual companies and products mentioned herein may be the trademarks of their respective owners.